

What is happening at Summerdale Primary School Early Years?

MUSIC & MOVEMENT

Instruments, songs and dance moves. Followed by an outdoor play in our Kindergarten playground. All ages.



CLIMB, CHAT & COFFEE

A great gross motor session in the Kindergarten playground. Make little bodies strong and coordinated while chatting and sipping coffee. All ages.



STAY & PLAY

Fun for everyone. Art and craft, gross motor, fine motor, stories, songs, construction, fun and games. All ages.



BABY GROUP

Open for babies from 0 - 12 months and their Mums, Dads, Grandparents. Get to know other families and be amazed by how babies watch and learn from each other. Pop in for 15 minutes or the whole hour.

PRE KINDER

We will run sessions specifically for children in this age group later in the year. For this term children who turn 4 this year are invited to attend any of our sessions. Siblings are also welcome to attend.

SESSION TIMES, TERM 1 2020

STARTING TUESDAY 18TH FEBRUARY

TUESDAY With Mrs Joyce	THURSDAY With Mrs Joyce	FRIDAY With Mrs Joyce
	Stay & Play 9.00am to 10.30am In the LiL Room	Stay & Play 9.00am to 10.30am In the LiL Room
Stay & Play 10.15am to 11.15am In the LiL Room		
Baby Group 2.00pm to 3.00pm In the LiL Room	Music & Movement 2.00pm to 3.00pm In the LiL Room & Kinder playground	Climb, Chat & Coffee 2.00pm to 3.00pm In the Kinder playground



WHAT TO BRING

A hat in summer, a coat in winter.

Pre Kinder and Stay & Play: a drink of water.

Climb, chat & coffee: a drink of water and a coffee mug with a lid (we will also have some available).

Always bring your smile, it can make someone's day.

Follow our Facebook page, **Summerdale Primary School LIL** for photos, special events and session updates.



Launching into Learning is for families with children from birth - 4 years of age. Children learn a lot in the early years of life, in fact 85% of the brain development occurs by the age of 5.

We can provide opportunities for you to be involved in your child's learning in a supportive environment, helping you give your child a great start.

Children will be involved in experiences that will help develop their speaking, reading, physical, social and emotional skills through fun and creativity.

At all our sessions you can expect to see and experience parents, teachers and children playing alongside each other, having fun and learning.

*All our sessions are free
and run during school terms.*

Feeling nervous about attending any sessions?

Send us a Facebook message or contact Summerdale Primary School and ask for Deb Joyce and we may be able to help.

CONTACT DETAILS

PO Box 439, Prospect, Tas 7250

187 Peel Street, Summerhill, Tas 7250

Phone 03 6344 5333

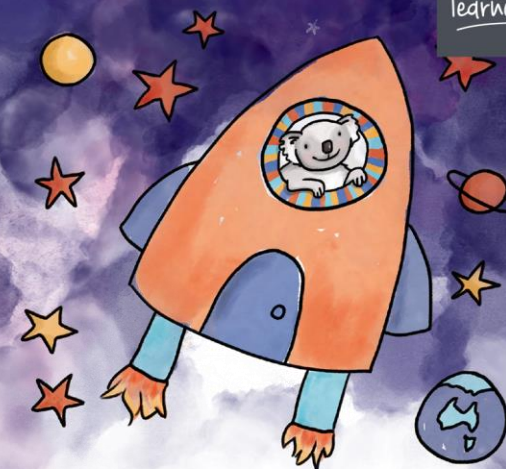
Email summerdale.primary@education.tas.gov.au

Web www.education.tas.gov.au



Department of Education
Learning
GPO Box 169
Hobart, Tasmania 7001

DEPARTMENT OF
EDUCATION
learners first



Launching into Learning

Summerdale
Primary School

Early Years Sessions
and Information
Term I, 2020

Department of Education

